

OTHER SAFETY TIPS

- Haste makes waste—and pain
- Keep aisles and doorways clear!
- If you fall—REPORT IT!
- If you need help—ASK FOR IT!
- Bend your knees to lift!
- Don't carry large loads that block your view of your walking area.

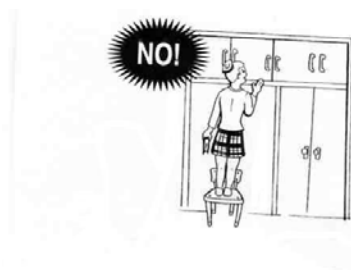
REMEMBER:

Wakulla County Risk Management
is available for help, suggestions
and training. Call us! 850.926.0065

A Safe Place to Learn and Work!

OTHER HELPFUL SUGGESTIONS

- Do not use a metal ladder or step stool to do electrical work!
- Do not use a ladder or step stool that needs repair!
- Do not put the step stool on anything except the floor!
- Do not carry large or heavy boxes/packages up the ladder!
- Do not use the step stool or step ladder without opening the step-stool/step ladder legs correctly.



**WAKULLA COUNTY SCHOOLS
DAVID B. MILLER,
SUPERINTENDENT**

P.O. Box 100
Crawfordville, FL 32326
Phone: 850.926.0065
Fax: 850.926.0123
E-mail: karen.wells@wcsb.us or
james.griner@wcsb.us

**WAKULLA COUNTY SCHOOLS
DAVID B. MILLER, SUPERINTENDENT**



*A Safe Place to
Learn and Work*

STEP UP WITH SAFETY

Tel: 850.926.0065

STEP UP WITH SAFETY

In October, 2004, PAEC initiated the "Step Up with Safety" program. This program is funded with the savings that are accrued through the PAEC Districts Accident Prevention Safety Program.

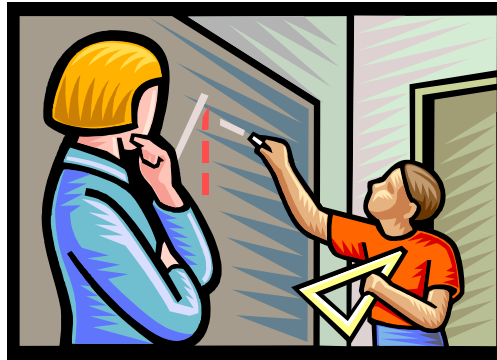
REMEMBER : Only you can protect yourself from injury!

Use Step Stools and Ladders to access areas that are out of your reach.



Step Stools are available at every school.

A SAFE PLACE TO LEARN AND WORK



Make Safety a Habit!

- Your school has step stools and step ladders available for your use.
- Do you know where the step stool is kept? If not, contact your Principal or the School Office.
- See the Operation Foreman to obtain the Step Ladder.

DO'S AND DON'TS

- Don't—use a chair, desk or ledge as a step or ladder.
- Do—use a step stool or step ladder.
- Don't—use a bookcase as a step stool or use a step stool as a bookcase.
- Do—use a step stool or a step ladder.
- Don't—overreach to retrieve anything.
- Do—use a step stool or a step ladder.



And Don't Forget—Ask for Help when you need it.

**WAKULLA COUNTY SCHOOLS
DAVID B. MILLER, SUPERINTENDENT**

P.O. Box 100

Crawfordville, FL 32326

Phone: 850.926.0065

Fax: 850.926.0123

E-mail: karen.wells@wcsb.us or

james.griner@wcsb.us