

## VISITORS

If you are a visitor in the school or on school grounds at the time of the Severe Weather/Tornado alert, follow the instructions of the school staff.

Do not return to your car in an effort to go home until the alert has ended. You are safer in the building



than in your car or outside in the weather.

If you are a parent, remember that the school

The teachers and staff have been trained to deal with severe weather while at school. Follow their instructions and stay calm.

staff has practiced and is prepared for this type of

emergency. Follow instructions and stay calm. Your kids will know what to do and will stay calm if you do.

## Other Safety Tips

Remember: You are the best source of safety for you and our kids.

- Plan ahead
- You cannot outrun a tornado.
- If you are a parent and are at school, **STAY** there until the alert is over.
- If you are a parent and are at home, **STAY** there until the alert is over.
- If you are a teacher **KNOW** and **DO** what you have been trained to do.
- If you are a Bus Driver and are waiting, loading or unloading at a school, **MOVE INSIDE** the school building.
- If you need help or have a question on **ANYTHING...ASK.**

*This information is gathered from the Department of Emergency Management, the National Weather Service and Wakulla County Public Schools.*



# WCSB

David B. Miller, Superintendent  
P.O. Box 100  
69 Arran Road  
Crawfordville, FL 32326

Risk Management Department  
850.926.0065  
karen.wells@wcsb.us or  
james.griner@wcsb.us  
www.wakullaschooldistrict.org



## SEVERE WEATHER AND TORNADOS



Tel: 850.926.0065

# SEVERE WEATHER

Examples of Severe Weather are:

- High Winds
- Thunder and Lightning Storms
- Hail
- Tornadoes

## TORNADOS

Tornado alerts come in two definitions, a Watch and a Warning.



Severe Weather is ANY weather condition that might cause damage to structures or injury to students and staff.

### **Tornado Watch:**

The conditions are good for tornadoes to form in your area.

### **Tornado Warning:**

A tornado has been sighted in your area.

### **REMEMBER:**

If a tornado warning is issued for your area and the sky becomes threatening, move to your

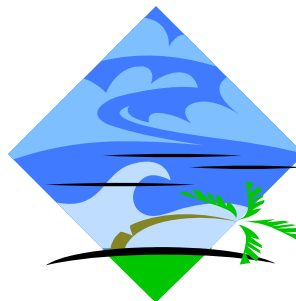
pre-designated Safe Shelter Area.

## KEEP YOUR EYES OPEN, LISTEN AND KEEP CALM

When outside of the school building and lightning and thunder begin and the winds pick up, **GO INSIDE THE BUILDING IMMEDIATELY.**

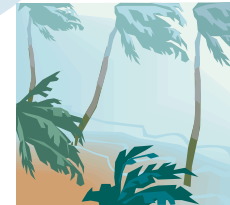
## REMEMBER

- More than 100 persons are killed each year by lightning.
- Return to your classroom and listen for further instructions.
- The school administration office staff will keep you informed of any weather changes.
- All visitors should remain in the building until the weather passes.
- If you hear the Emergency Alarm and a PA announcement, refer to your Emergency Management Plan flip chart and follow the plan.



## CLASSROOMS

- Listen for the announcement to move to your assigned safe area.
- Move quickly and quietly and close the door behind you.
- FOLLOW INSTRUCTIONS and follow the school Severe Weather/Tornado Emergency Procedure.
- Keep all students and visitors together and move to your designated Safe Shelter Area.



David B. Miller, Superintendent  
P.O. Box 100  
69 Arran Road  
Crawfordville, FL 32326

Risk Management Department  
850.926.0065  
karen.wells@wcsb.us or  
james.griner@wcsb.us  
www.wakullaschooldistrict.org